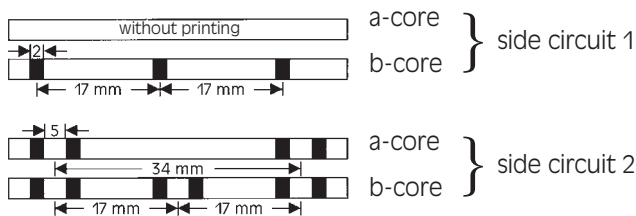


Colour code according to DIN VDE 0815

Installation Cables

J-YY . . . Bd, J-HH . . . Bd, J-Y(St)Y . . . Bd, J-H(St)H . . . Bd and J-2Y(St)Y . . . Bd

The Insulating coverings of single cores of a star quad are marked with black rings:



The cores of 5 star quads of a sub unit are counted according to the sequence of basic colours:

- Quad 1: basic colour of all cores red
- Quad 2: basic colour of all cores green
- Quad 3: basic colour of all cores grey
- Quad 4: basic colour of all cores yellow
- Quad 5: basic colour of all cores white

The marker of units are identified with a red helix, the others with white or uncoloured.

The quads of sub units are counted according to the sequence of basic colours. The units are counted continuously through all layers beginning in the inner layer.

Installation Cables

J-Y(St)Y . . . Lg

2-paired installation cables are stranded to a star quad.

- circuit 1 a-core red, b-core black
- circuit 2 a-core white, b-core yellow

4- and multi-paired installation cables

- a-core of 1. pair in each layer is red
- other pairs are white
- b-core blue, yellow, green, brown, black in continuous repeat

Counting: from outside to inside

Installation Cables

JE-Y(St)Y . . . Bd, JE-LiYCY . . . Bd, JE-H(St) . . . and JE-HCH...Bd

Pair-colour-identification

The insulating cores are identified with different basic colours which are repeated sequentially in each unit.

Basic colours of pairs

Pair	1	2	3	4
a-core	blue	grey	green	white
b-core	red	yellow	brown	black

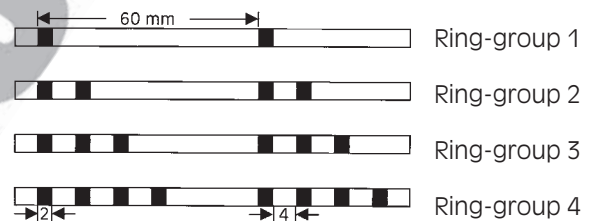
2-paired cables: the cores are stranded to a star quad:

- circuit 1: a-core blue b-core red
- circuit 2: a-core grey b-core yellow

Each unit is assigned to one group of ring. All cores in each unit are marked with coloured rings and ring-groups.

Counting direction in all units is from inside to outside.

Ring-colour and Ring-group



Unit-identification

Unit-No.	Ring-colour	Ring-group	Colour-identification tape
1	pink	I	-
2		II	
3		III	
4		IIII	
5	orange	I	-
6		II	
7		III	
8		IIII	
9	violet	I	-
10		II	
11		III	
12		IIII	
13	pink	I	blue
14		II	
15		III	
16		IIII	
17	orange	I	red
18		II	
19		III	
20		IIII	

Cables with more than 12 units contain coloured plastic helix in addition to ring code.